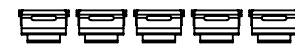
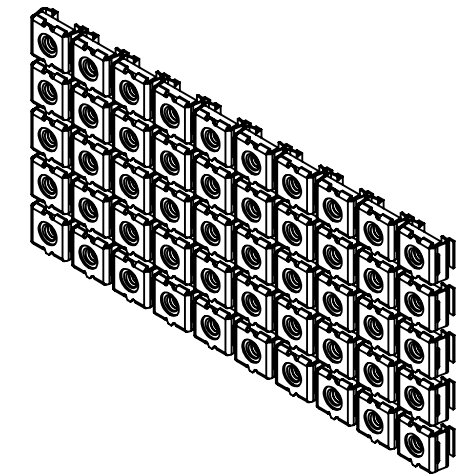
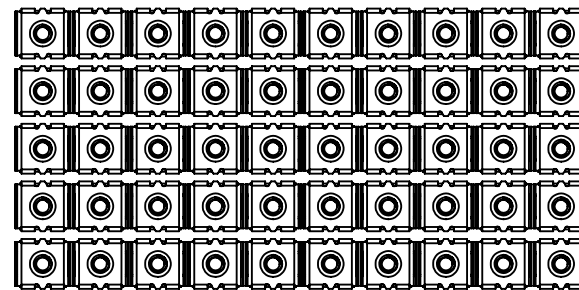


8 7 6 5 4 3 2 1

ITEM #	PART NUMBER	CONFIGURATION	REV	DESCRIPTION	MATERIAL	QTY
1	NUT-CN	1032-X		Steel Cage Nut, #10-32 Thread	PURCHASE PART	50
2	PKG-10041			6x6 PERFORATED AUTO-POLY BAG	PURCHASE PART	1

F
E
D
C
B
A

F
E
D
C
B
A



PROPRIETARY AND CONFIDENTIAL:
THE INFORMATION CONTAINED IN THIS DRAWING IS THE SOLE PROPERTY OF RXL. ANY REPRODUCTION IN PART OR AS A WHOLE WITHOUT THE WRITTEN PERMISSION OF RXL IS PROHIBITED.

SERIES/FAMILY NUMBER:
RXL-2049

DESCRIPTION:
#10-32 Cage Nut, QTY50

REVISION
A

DATE
2/18/2019

REVISION DESCRIPTION:
Initial

CONFIGURATION (SEE TABLE DETAILS/"X" DENOTES COLOR):
X1032050

COMMENTS/FOLDER PATH:
B:\RXL Inc\RXL Engineering - General\RXL\Section 2 - Open Racks\RXL-2049 Cage Nut Kit\

UNLESS OTHERWISE SPECIFIED:
DIMENSIONS ARE IN INCHES
TOLERANCES: ±0.03
FRACTIONAL: ±1/32
ANGULAR: ±1°
TWO PLACE DECIMAL ±0.03
THREE PLACE DECIMAL ±0.030

MATERIAL:
FINISH:
PAINT
WEIGHT:
0.68lbs.
SURFACE AREA:
175.23in.²

FULL PART NUMBER:
RXL-2049-X1032050
DRAWN BY: Jackson Chong
DRAWN DATE: 2/18/2019
DO NOT SCALE DRAWING
Scale: 1:4
DRAWING SIZE: **B**
SHEET 1 OF 2

8 7 6 5 4 3 2 1

A

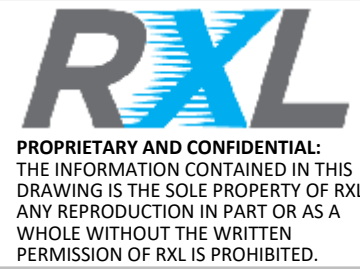
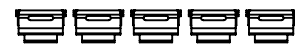
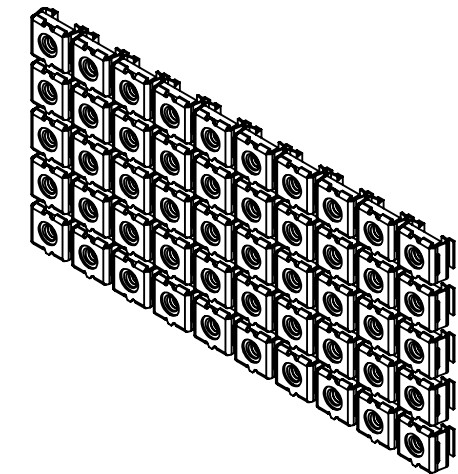
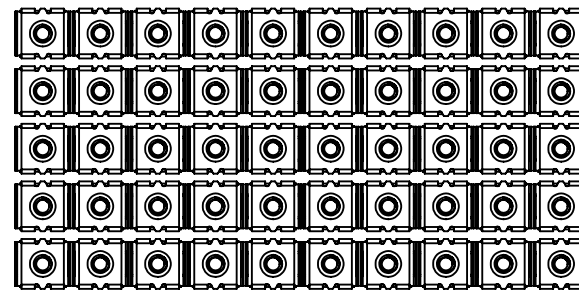
A

8 7 6 5 4 3 2 1

ITEM #	PART NUMBER	CONFIGURATION	REV	DESCRIPTION	MATERIAL	QTY
1	NUT-CN	1224-X		Steel Cage Nut, #12-24 Thread	PURCHASE PART	50
2	PKG-10041			6x6 PERFORATED AUTO-POLY BAG	PURCHASE PART	1

F
E
D
C
B
A

F
E
D
C
B
A



SERIES/FAMILY NUMBER: RXL-2049		CONFIGURATION (SEE TABLE DETAILS/"X" DENOTES COLOR): X1224050
DESCRIPTION: #12-24 Cage Nut, QTY50		
REVISION A	DATE 2/18/2019	REVISION DESCRIPTION: Initial

COMMENTS/FOLDER PATH: B:\RXL Inc\RXL Engineering - General\RXL\Section 2 - Open Racks\RXL-2049 Cage Nut Kit\
UNLESS OTHERWISE SPECIFIED: DIMENSIONS ARE IN INCHES TOLERANCES: ±0.03 FRACTIONAL: ±1/32 ANGULAR: ±1° TWO PLACE DECIMAL ±0.03 THREE PLACE DECIMAL ±0.030

MATERIAL:	FULL PART NUMBER: RXL-2049-X1224050
FINISH: PAINT	DRAWN BY: Jackson Chong
WEIGHT: 0.68lbs.	DRAWN DATE: 2/18/2019
SURFACE AREA: 175.23in.²	DO NOT SCALE DRAWING Scale: 1:4
	DRAWING SIZE: B SHEET 2 OF 2

8 7 6 5 4 3 2 1

A

A