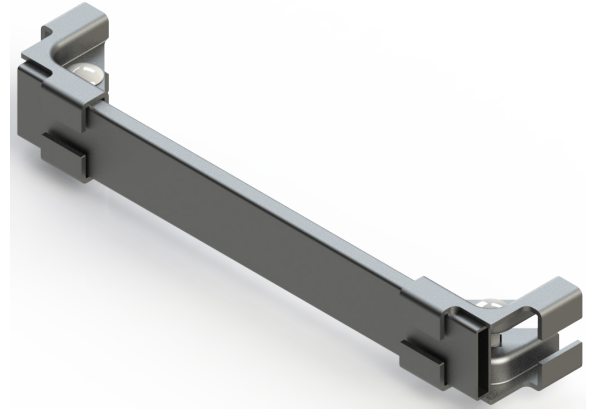


The End Termination Kit is designed to close off the end of a cable runway section. The kit includes one cross member and two Junction Splice Kits. For 2" Stringer version, use part # 1227. Choice of powder coated finish.



ORDERING INFORMATION				
1 0 2 7 -	Color		Width	Runway Width
	WH	White	06	6"
	BK	Black	12	12"
	GR	Grey	18	18"
			24	24"

Included

- (1) Cross Member
- (1) Junction Splice Kit

SPECIFICATIONS

Description	Cable Runway End Termination Kit		
Use	Indoor Use Only		
Available Sizes	• Runway Width:	6" / 12" / 18" / 24"	
Material	16GA Steel Tube		
Construction	Machined Tubing		
Finish	Powder Coated Paint		